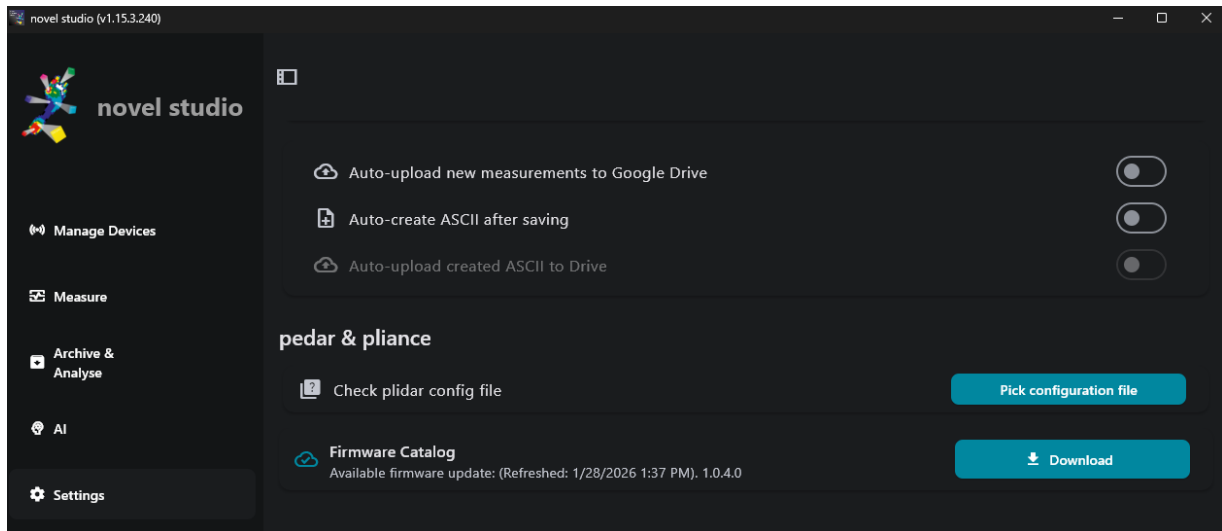


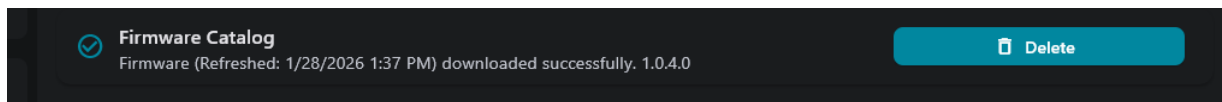
Firmware Update Instructions

Please make sure that the battery is fully charged before beginning the process.

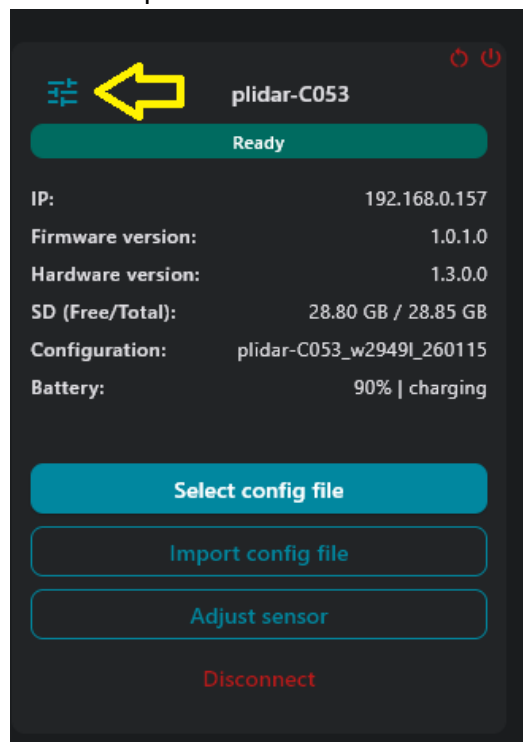
1. Connect to the appropriate wifi network for your devices
2. Open Studio
3. Ensure you are logged in and have permission to update firmware
4. Go to Settings and scroll to pedar & pliance and click “check for firmware”. If available, a new version will be shown:



5. Click “download” and wait for the “downloaded successfully” message.



6. Go to Manage Devices, turn on the plidar and connect. Check the current firmware version:



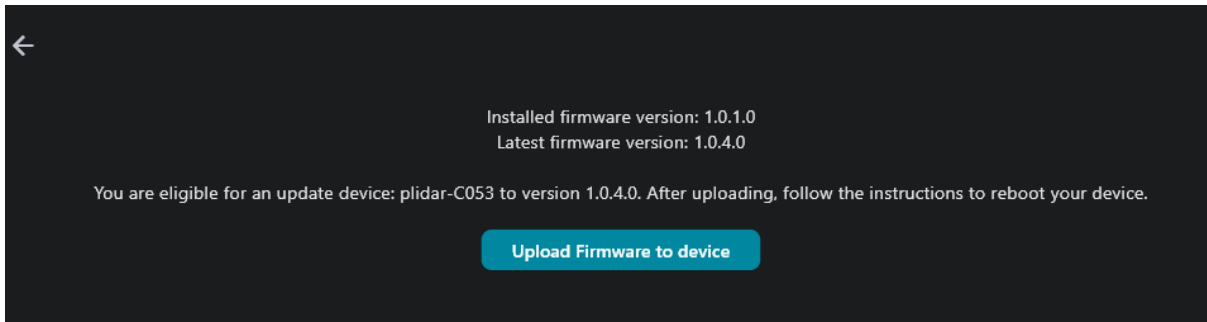
Firmware Update Instructions

7. Click the plidar settings/configuration button:

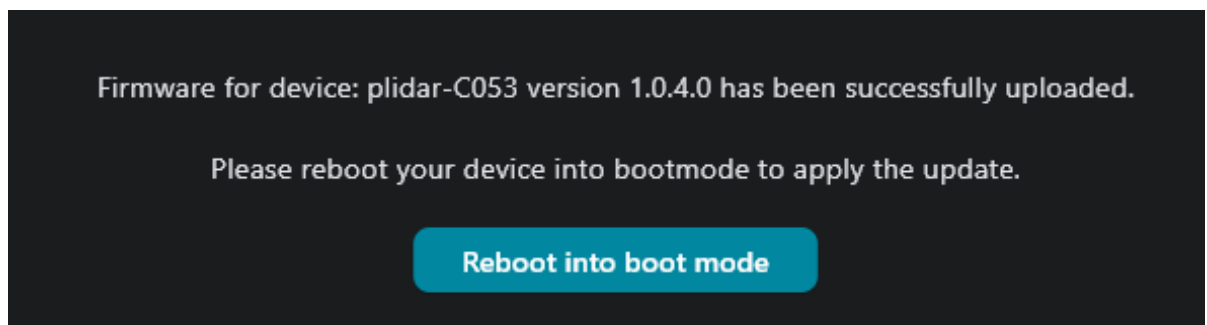


8. Click on the “update firmware” button

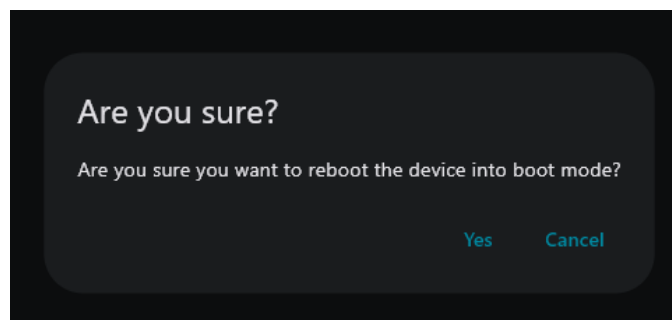
9. Click “upload firmware to device”:



10. Click “reboot into boot mode”



11. And confirm via “yes”



12. You should see the device power cycle (10-20 seconds). Wait for the device to turn blue again

13. Go back to Manage Devices and connect to the device again and you should see the updated firmware version:

Firmware Update Instructions

plidar-C053

Ready

IP: 192.168.0.157

Firmware version: 1.0.4.0

Hardware version: 1.3.0.0

SD (Free/Total): 28.80 GB / 28.85 GB

Configuration: plidar-C053_w2949l_260115

Battery: 100% | fullyCharged

Select config file

Import config file

Adjust sensor

Disconnect